

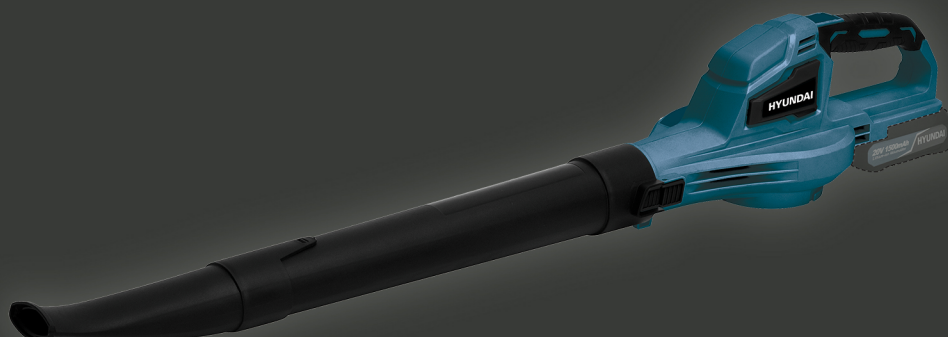
**HYUNDAI**  
POWER PRODUCTS

# KKUMULÁTOROS LOMBFÚVÓ HYD-4245-20V

—  
Eredeti használati utasítás



GENUINE PRODUCT OF  
HYUNDAI CORPORATION



**GENERAL POWER TOOL SAFETY WARNINGS**

**IMPORTANT  
READ CAREFULLY BEFORE USE.  
KEEP FOR FUTURE REFERENCE**

**Safe operating practices for hand-held mains-operated electrical garden vacuums, and garden blower/vacuums with or without shredding means and garden blowers**

**Training**

- Read the instructions carefully. Be familiar with the controls and the correct use of the machine.
- Never allow children or people unfamiliar with these instructions to use the machine. Local regulations can restrict the age of the operator.
- Keep in mind, that the operator or user is responsible for accidents or hazards occurring to other people or their property.

**Preparation**

- Obtain ear protection and safety glasses. Wear them at all times while operating the machine.
- While operating the machine always wear substantial footwear and long trousers. Do not operate the machine when barefoot or wearing open sandals. Avoid wearing clothing that is loose fitting or that has hanging cords or ties.

## **SPECIAL SAFETY INSTRUCTIONS FOR BATTERY-OPERATED TOOLS**

- 1) Ensure that the tool is switched off before inserting the battery. Inserting a battery into a tool that is switched on may result in accidents.
- 2) Recharge the batteries indoors only because the battery charger is designed for indoor use only. Risk of electric shock.
- 3) To reduce the electric shock hazard, unplug the battery charger from the mains before cleaning the charger.
- 4) Do not subject the battery to strong sunlight over long periods and do not leave it on a heater. Heat damages the battery and this is risk of explosion.
- 5) Allow a hot battery to cool before charging.
- 6) Do not open up the battery and avoid mechanical damage to the battery. Risk of short circuit and fumes may be emitted that irritate the respiratory tract. Ensure fresh air and seek medical assistance in the event of discomfort.
- 7) Do not use non-rechargeable battery. This could damage the appliance.
- 8) The recommended ambient temperature range for the charging system during charging is from 4°C to 40°C.
- 9) The recommended ambient temperature range for tool and battery storage is from 0°C to 50°C.
- 10) The recommended ambient temperature range for tool and battery use is from -5°C to 50°C.
- 11) Remove the battery from the device before storage.
- 12) Electrolyte leaking from the cells can cause damage to the skin, clothes or any other items exposed to it. If the electrolyte contacts the skin or clothes, wash thoroughly with clean water. If the electrolyte enters into the eyes, do not rub the eyes but flush them immediately with copious amounts of clean water such as tap water, and immediately consult a doctor.
- 13) Do not disassemble or modify the battery, which can cause short-circuiting between cells or between the cell and its wiring, and disables the battery's safety protection system. These can lead to electrolyte leakage, overheating or a cell or battery, bursting and fire.
- 14) Avoid casual or inadvertent shorting of a battery with metallic objects such as: wire, tools, neckless or hairpins, which can cause short-circuiting, which cause excess current flow, electrolyte leakage, heating of cells or batteries, bursting and fire.
- 15) Keep battery away from a fire or heat. The insulation materials will melt and the gas release vent and protection system will be damaged, causing electrolyte leakage, bursting and possibly fire.
- 16) Not allow the battery to contact with water or gets wet, it may short-circuit, overheat, rust or lose its functions.
- 17) Do not expose the battery to mechanical shock, for example, by dropping, throwing or crushing, causing electrolyte leakage, cell and battery heating, bursting and fire.
- 18) Avoid the battery to directly connect to electric source such as a car lighter socket, or car battery, which may cause excess current to flow at high voltage and can cause electrolyte leakage, overheating of a cell or battery, bursting and fire.
- 19) Rechargeable batteries are to be removed from the appliance before being charged.
- 20) Different types of batteries or new and used batteries are not to be mixed.
- 21) Batteries are to be inserted with the correct polarity.
- 22) Exhausted batteries are to be removed from the appliance and safely disposed of.
- 23) If the appliance is to be stored unused for a long period, the batteries are removed.
- 24) The supply terminals are not to be short-circuited.

## INFORMATION

- The declared vibration total values and the declared noise emission values have been measured in accordance with a standard test method and may be used for comparing one tool with another.
- The declared vibration total values and the declared noise emission values may also be used in a preliminary assessment of exposure.



## WARNINGS

- The vibration and noise emissions during actual use of the power tool can differ from the declared values depending on the ways in which the tool is used especially what kind of workpiece is processed;
- It is necessary to identify safety measures to protect the operator that are based on an estimation of exposure in the actual conditions of use (taking account of all parts of the operating cycle such as the times when the tool is switched off and when it is running idle in addition to the trigger time)

## INTENDED USE

EN

This equipment is only intended to blow thin foliage at private homes and hobby gardens.

This equipment is not suitable for commercial use. Any other use not expressly approved in these instructions may result in damage to the equipment and serious dangers to the user.

The operator or user is responsible for accidents or damage to other people and their property.

The manufacturer is not liable for damage caused by improper use or incorrect operation.

## ASSEMBLY INSTRUCTIONS

EN

1. Connect the nozzle with the blower tube and locked by the button. (FIG.B)
2. Install the lower section of the blower tube (installed in the previous step) to the upper section and push until it locks into place by the button. You will hear a click.(FIG.C)
3. Insert the battery into its location on the bottom of the handle. Slide it into place in the direction shown. You will hear a click when it locks into place.(FIG.D)

## BEFORE USE

EN

### UNPACKING

1. Unpack all parts and lay them on a flat stable surface
2. Make sure the delivery contents are complete and free of damage. If you find that parts are missing or show damage, do not use the product but contact your dealer/service center. Do not use the product unless missing parts have been delivered in addition or defective parts have been replaced. Using an incomplete or damaged product represents a hazard to people and property.
3. Ensure that you have all the accessories and tools needed for assembly and operation.

### CHARGING THE BATTERY PACK

#### Note:

1. **The battery can be damaged in case of improper charging.**
2. **Remove the charger's mains plug before inserting or removing the battery.**

The battery is partially charged upon delivery to avoid damage to the battery caused by a deep discharge. Prior to initial start-up and when the battery is low, the battery should be charged. To do so, please proceed as follows:

1. Slide the battery pack (5) onto the charger (6) upside down till it locks in place.
2. Insert the mains plug of the charger (6) into a properly fused mains socket. The RED charge control LED

- (11) is illuminated; and charging requires approx. 60min.
3. Wait until the RED charge control LED (11) goes out and green charge control LED (10) is illuminated, the battery is fully charged.
  4. Hold onto the mains plug while pulling the power cable of the charger out of the mains socket. The battery pack (5) and the charger (6) may have become warm during charging, allow the battery to cool down to room temperature.
  5. Take the battery (5) out of the charger (6) by pressing and holding the battery release button (7) and pulling the battery pack (5) out of the charger (6).

## **REMOVING /INSERTING THE BATTERY**

1. Insert the battery pack (5), place it on a guide track and push it back into the battery holder (5a). It will audibly snap in.
2. Detach the battery pack (5) from the tool, press the battery release button (7) on the battery pack (5) and pull the battery out.

## **CHECKING THE BATTERY CHARGING LEVEL**

The battery comes with an integrated battery level indication.

The battery status is displayed as follows by the three LEDs of the battery level indication (LED) (9).

LED color	Meaning
Green-Orange-Red	Maximum charge/power
Orange-Red	Medium charge / power
Red	Weak charge – Recharge the battery

Press on the battery charge level button (8) on the battery pack (5). You can read the battery status from the battery level indication (LED) (9).

## **USE**

**EN**

### **Instructions for use**

**Press the power button(3a) to open/close the power**

**Press the speed adjusting button to adjust the air speed.**

1. Choose a dry day and preferably when leaves have had a chance to dry out. Using a rake to turn the leaves the day before you intend to clear them is recommended as this helps them to dry on both sides.
2. Stand upright and hold the blower, using the handle.
3. Keep the blower approximately 10-15cm off the ground and aim it at the leaves.
4. Turn the power switch on and move the leaves towards a chosen point on a flat surface. Swing the blower from left to right to get a better coverage.

## **CARE AND MAINTENANCE**

**EN**

Before each use check the leaf blower for any obvious defects such as loose, worn or damaged parts.

Do not use the leaf blower if there is any sign of damage.

Check the outer sections of the body for any damage and if present get a qualified person to replace.

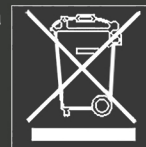
Carry out the following maintenance and cleaning work regularly:

- Every time you use the leaf blower clean all parts especially the ventilation slots. Remove any moisture, debris or dust and store in a clean dry environment.
- Do not use or submerge the leaf blower in water or use cleaning agents or solvents, these may damage



**HULLADÉKKEZELÉS:** Az elektromos kéziszerszámokat, tartozékokat és csomagolóanyagokat a környezetvédelmi szempontoknak megfelelően kell újra felhasználásra leadni.

**Csak az EU- tagországok számára:** Ne dobja ki az elektromos kéziszerszámokat a háztartási szemétkébe! Az elhasznált villamos és elektronikus berendezésekre vonatkozó 2012/19/EU európai irányelvnek és a megfelelő országos törvényekben való átültetésnek megfelelően a már nem használható elektromos kéziszerszámokat külön össze kell gyűjteni és a környezetvédelmi szempontoknak megfelelően kell újra felhasználásra leadni.



## Magyarországi kizárólagos forgalmazó:

**Devon Imp-Ex Kft.**

1103 Budapest, Noszlopy u. 34.

## Garanciális szerviz:

**1211 Budapest (Csepel Gyártelep)**

Déli bekötő-út 10/C

[www.barkacsgep.com](http://www.barkacsgep.com)